








Jasmy Secure PC Manager Quick Start Guide

May 2024
Jasmy Incorporated

Jasmy Secure PC Download Page

https://www.jasmy.co.jp/jasmy_secure_pc/software_english_download_2024/

Jasmy Secure PC Download Site		
Product 製品	Version	Download
 Jasmy Secure PC : Agent PRO	2.7	↓ 277MB
Document	Version	Download
 Jasmy Secure PC Manager Operating instructions	2.2	↓ 7.3 MB
 Jasmy Secure PC Agent PRO Operating instructions	2.7	↓ 4.2 MB
 Jasmy Secure PC Manager Quick Start Guide	2.2	↓ 7.3 MB
 Jasmy Secure PC Agent PRO Quick Start Guide	2.7	↓ 4.2 MB

Please download both
Manager Operating instructions

(This guide)

✔ **A temporary password will be automatically sent to the manager's email address.**

Mail Title:
Notice of download information and completion of temporary registration (Jasmy Incorporated)

This temporary password will be used only for the first login.
※Temporary passwords are different for each individual.

To work after above, please be sure to use the Windows PC which be already installed “Jasmy Secure PC Agent Pro”APP and registered on your own password

Please do not use this site URL (currently undergoing changes)

From: no-reply@jasmy.co.jp
To (managers e-mail address)

We are Jasmy Incorporated.

Thank you for applying for Jasmy Secure PC Manager.
Thank you for your patience, we are pleased to inform you that the provisional registration has been completed.
Please read the operations manual before use.

Currently, it is in a state of provisional registration.
To complete this registration, please follow the below.

■ Your registered email address
jass.test2+038-gbl-manager-en@gmail.com
■ Temporary password
V2Qjy8k\$

*The temporary password is valid for 30.
Please change your password within the period.

You will need your registered email address and temporary password when you log in for the first time.
Please remember to keep them safely.

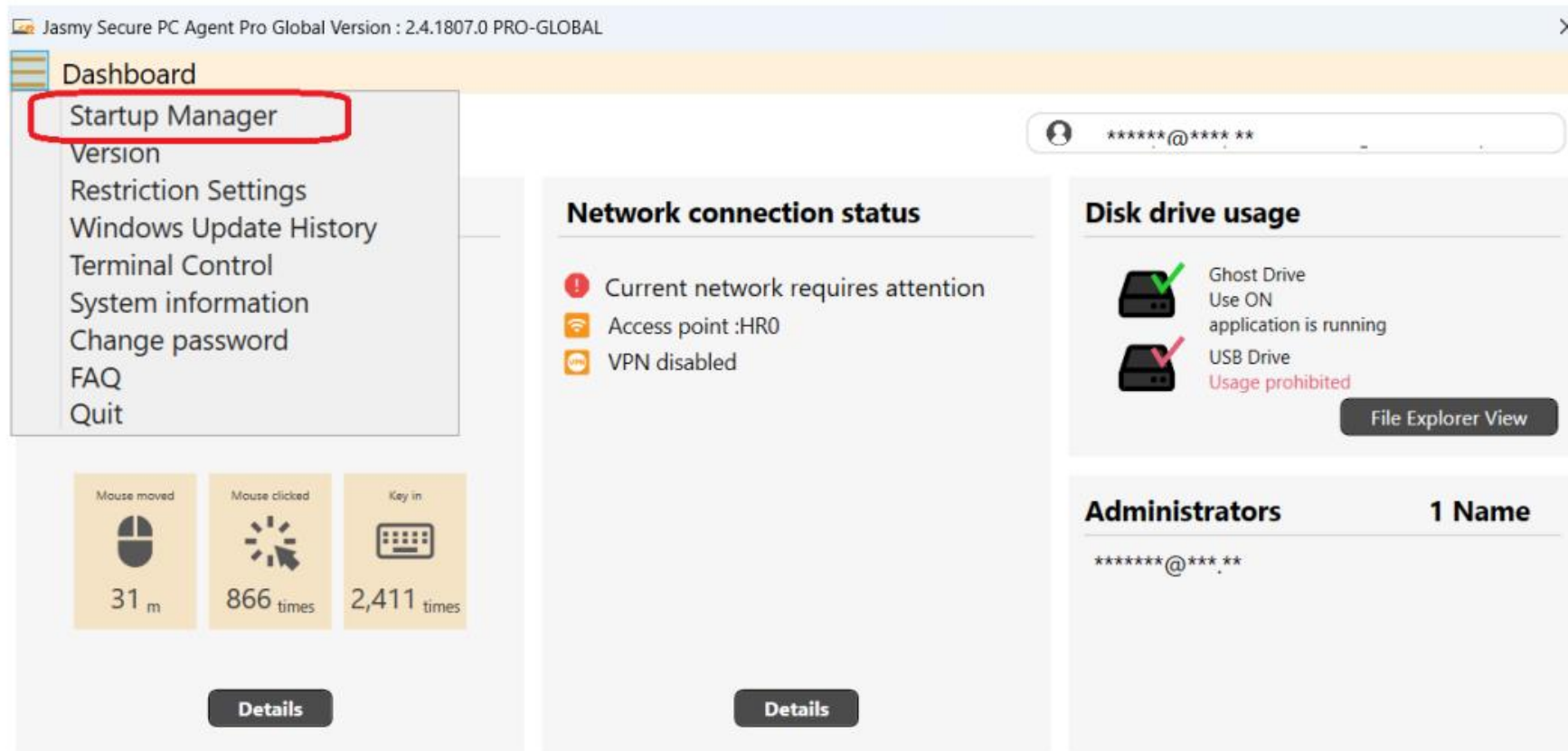
1. Install Jasmy Secure PC Agent PRO.
*For installation instructions, please refer to the email sent to you when you applied for Jasmy Secure PC Agent PRO (Subject: Notice of Download Information and Completion of Temporary Registration (Jasmy Incorporated)).
 2. Launch Jasmy Secure PC Agent PRO and select the "Startup Manager" button.
 3. Jasmy Secure PC Manager will launch automatically.
 4. Please enter the registered email address as the username on the login screen, and the temporary password provided in this email as the temporary password.
 5. Next, the password change screen will be displayed. Assign a new password with at least 8 characters, including at least one number and a combination of alphanumeric characters.
- You cannot use Jasmy Secure PC Manager with a temporary password.
Please ensure to change the password before use.

This completes the preparations for using "Jasmy Secure PC Manager".

If you have any questions, please contact us.
Jasmy Incorporated support window (support@jasmy.co.jp).

How to start (A partial excerpt from Operational Instructions)

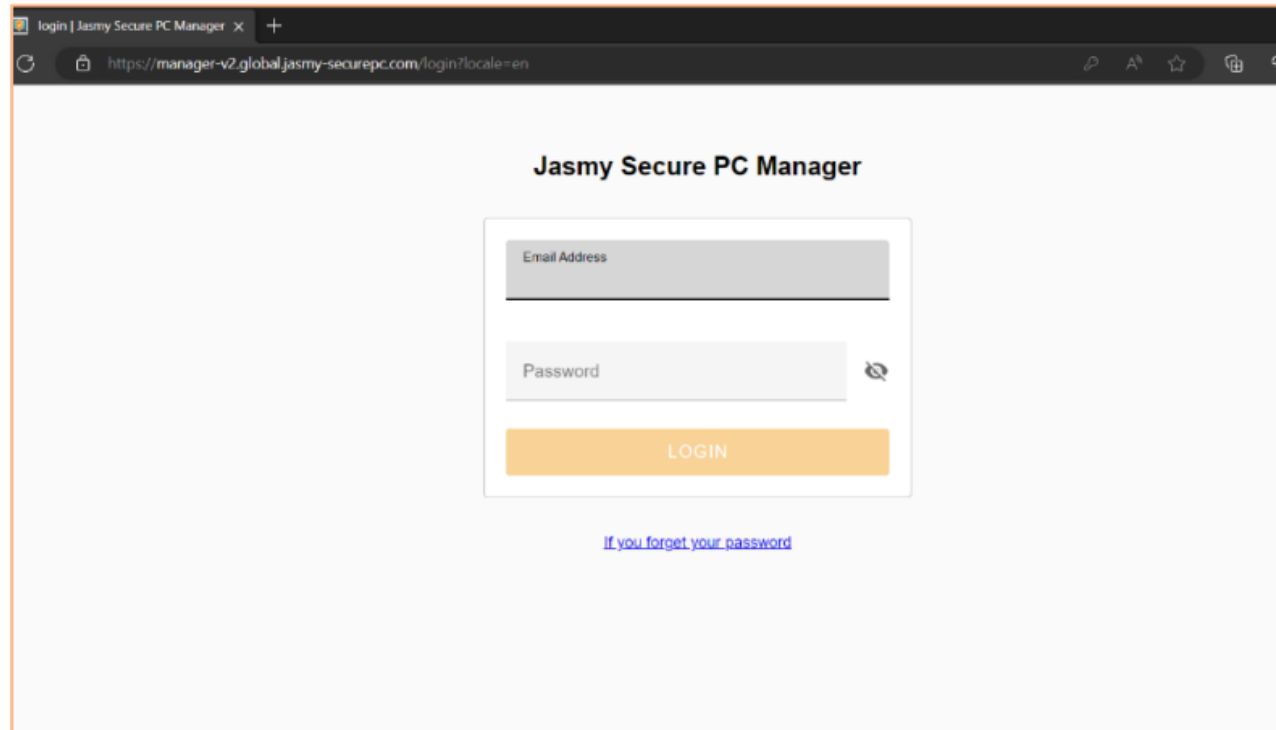
2. Select the "Startup Manager" button in the upper right corner of the main UI screen.



How to start (A partial excerpt from Operational Instruction)

3. The "Jasmy Secure PC Manager" website will open.

Enter the email address and temporary password (Figure 2) that was emailed to you in advance and select the "Login" button.



The screenshot shows a web browser window with the title "login | Jasmy Secure PC Manager". The address bar displays the URL "https://manager-v2.global.jasmy-securepc.com/login?locale=en". The main content area features the heading "Jasmy Secure PC Manager" centered above a login form. The form contains two input fields: "Email Address" and "Password". Below the password field is a toggle icon for visibility. A prominent orange "LOGIN" button is positioned below the form. At the bottom of the form area, there is a blue hyperlink that reads "If you forget your password".

How to start (A partial excerpt from Operational Instruction)

Read the software license agreement and select the "I agree" button

Scroll to the bottom of the software license agreement, read to the end, and select the "I Agree" button.

Jasmy Secure PC Manager

Jasmy Secure PC End User License Agreement

To use Jasmy Secure PC Manager, you must accept following terms.

[Translation]

Jasmy Secure PC End User License Rules

The User shall consent to these Jasmy Secure PC End User License Rules upon downloading the User Software and/or upon using the Service.

1. Definitions

"Account" means a user account for using the Service.

"Agreement" means an agreement executed between the User and Jasmy pursuant to these User Rules.

"Antisocial Conduct" means (1) a demand accompanied by the use or threat of force and arms, (2) an unreasonable demand and conduct having no legal cause, (3) threatening or committing violent behaviour relating to its business transactions, (4) an action to defame the reputation of or interference with the business of others by spreading rumours, using fraudulent means or resorting to force, or (5) any other actions similar or analogous to any of the foregoing in any jurisdiction.

"Customer" means any person/entity that subscribed for the Service and/or purchased the User Software.

"Jasmy" means Jasmy Incorporated.

"Manager" means any person which the Customer designates as the administrator of the Service for managing the Users.

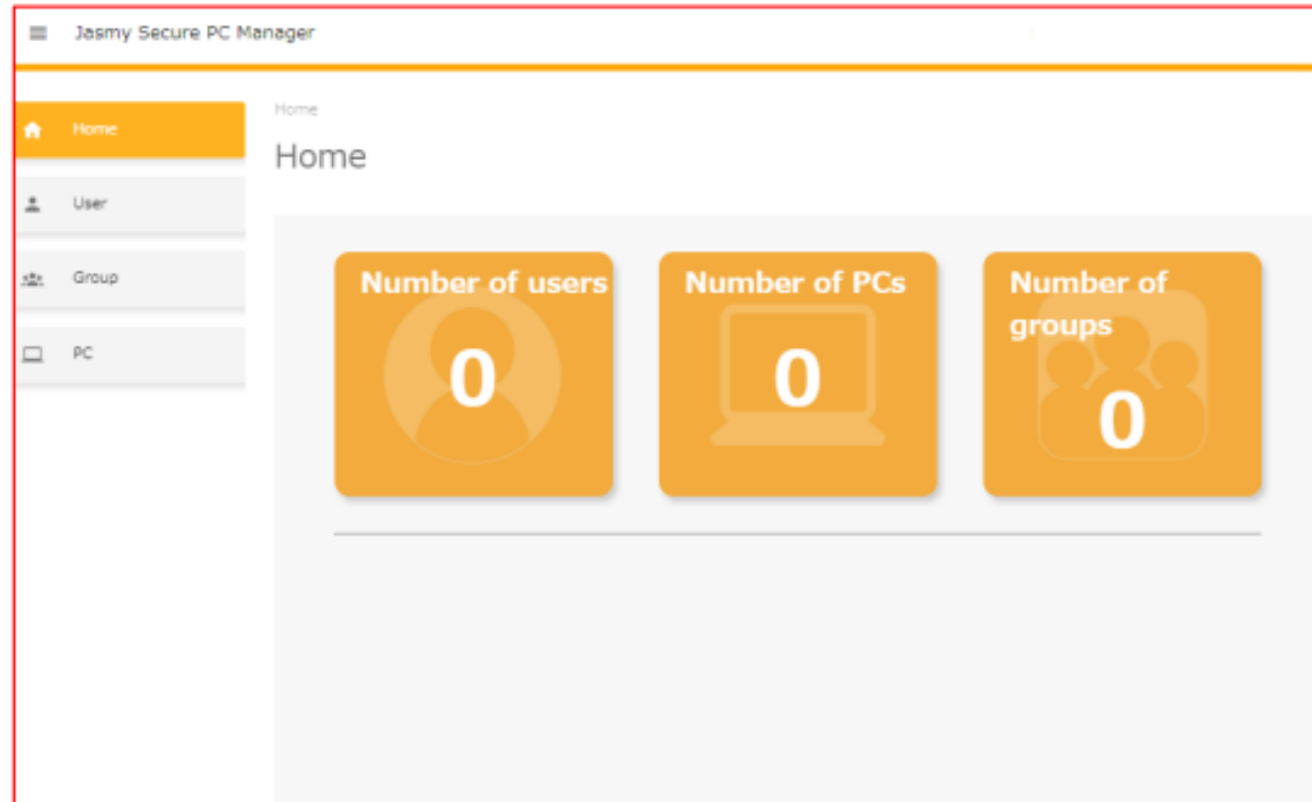
"Operation Data" means data generated while a terminal is in operation, including operation logs, input and output logs.

You can agree by scrolling down to the end of the terms.

AGREE

How to start (A partial excerpt from Operational Instruction)

"Jasmy Secure PC Manager" is ready and ready to use.



Caution:

Immediately after startup, the user to be managed (the user using the application "Jasmy Secure PC Agent") is empty.